



ST ANDREWS INTERNATIONAL SCHOOL
BANGKOK

A NORD ANGLIA EDUCATION SCHOOL

ENGLISH SUPPORT

Primary & High School



A programme designed to increase English language proficiency for non-native English speaking students.



PRIMARY SCHOOL

English as an Additional Language (EAL)

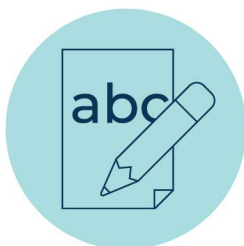
EAL 1

Our EAL 1 Programme is for children who are new to English i.e. children with little or no experience of learning English. The programme provides a mix of in-class support and small group withdrawal support to give your child a strong foundation in English.

Your child will be taught the English he or she needs to settle in, understand classroom routines and make friendships. Your child will also be taught phonics so they learn the sounds of English as well as their spelling patterns.



Small group
English
(4 hours)



Small group
Spelling/Phonics
(1 hour)



EAL during
Languages time
(1-3 hours)

**depending on
first language choice*



In-class LSA support
for Maths, Science
and Topic
(6 hours)



Small group
Reading
(1 hour)

EAL 2

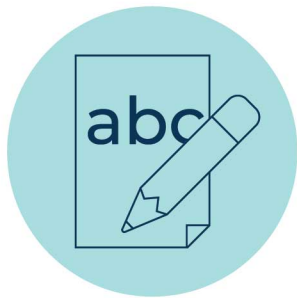
Our **EAL 2 Programme** is for children at the The Early Acquisition Programme stage i.e. children who are able to use English at a basic level but would struggle to cope with the demands of mainstream Literacy without in-class support.

Children receive small group support for Literacy and Spelling (taught by a qualified teacher). Children join mainstream classes for all other subjects.

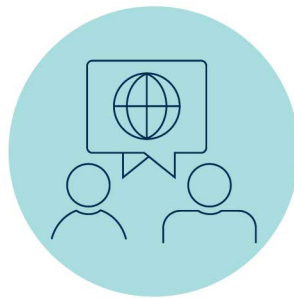
In Literacy children will study the same topic areas as the mainstream children. However there will be a much greater focus on vocabulary and sentence level work. Lessons will provide children with the basic language tools to access learning in the mainstream.



Small group
English
(4 hours)



Small group
Spelling/Phonics
(1 hour)



EAL during
Languages time
(1-3 hours)

**depending on
first language choice*



Small group
Reading
(1 hour)

EAL 3

Our **EAL 3 Programme** is for children who are developing competence with their English language. Children at this stage are typically able to cope with the mainstream English curriculum content. Children are able to complete activities independently.

Children continue to study EAL instead of taking up a Modern Foreign Language. This additional boost allows children to consolidate their learning. Children will also learn new vocabulary relevant to the topics they will be studying in the mainstream class.



EAL during Languages time
(1-3 hours)

**depending on first language choice*

**there is an additional 12,000 baht fee for children
studying 3 lessons of EAL per week.*





HIGH SCHOOL

EAL Literacy Support

Year 7 to Year 9 Students

Level 1: This is designed for intermediate English language learners who have high levels of conversational spoken English and mostly accurate written English. These students will receive one session a week of Literacy Support lessons. The focus is, generally, on improving reading comprehension and fluency in reading and writing.

Level 2: This is for students who have basic spoken English but for whom reading and writing is at beginner levels. These students will receive 4 sessions a week of Literacy Support lessons, where the focus will be holistic: writing (vocabulary and grammar), reading (phonics, decoding, and comprehension), and oracy (conversational and academic).

Level 3: This is for students who are absolute beginners at the very start of their English acquisition journey. These students will receive 4 sessions a week of Literacy Support lessons, where the focus will be holistic: writing (vocabulary and grammar), reading (phonics, decoding, and comprehension), and oracy (conversational and academic). These students will also be withdrawn from the Humanities (History and Geography in years 8 and 9) to receive guided instruction by one of the Literacy Support team in those subjects. Finally, in-class support is provided for English, Maths and Science.

Year 10 to Year 13 Students

Depending on their individual academic interests and higher educational goals, students select a tailored programme of IGCSE courses in Year 10 - Year 11 and International Baccalaureate (IB) courses in Year 12 - Year 13. For those looking to further develop their English skills, English as a Second Language is a course option available within the IGCSE curriculum, whereas the course English B is perfect for students looking to build on this progress in the IB programme.



standrews.ac.th